

This map was prepared for Assessment and Taxation purposes only and has NOT been prepared for legal, engineering or surveying purposes.

SW1/4 SW1/4 SEC 19 T4N R35E WM UMATILLA COUNTY

06/03/20

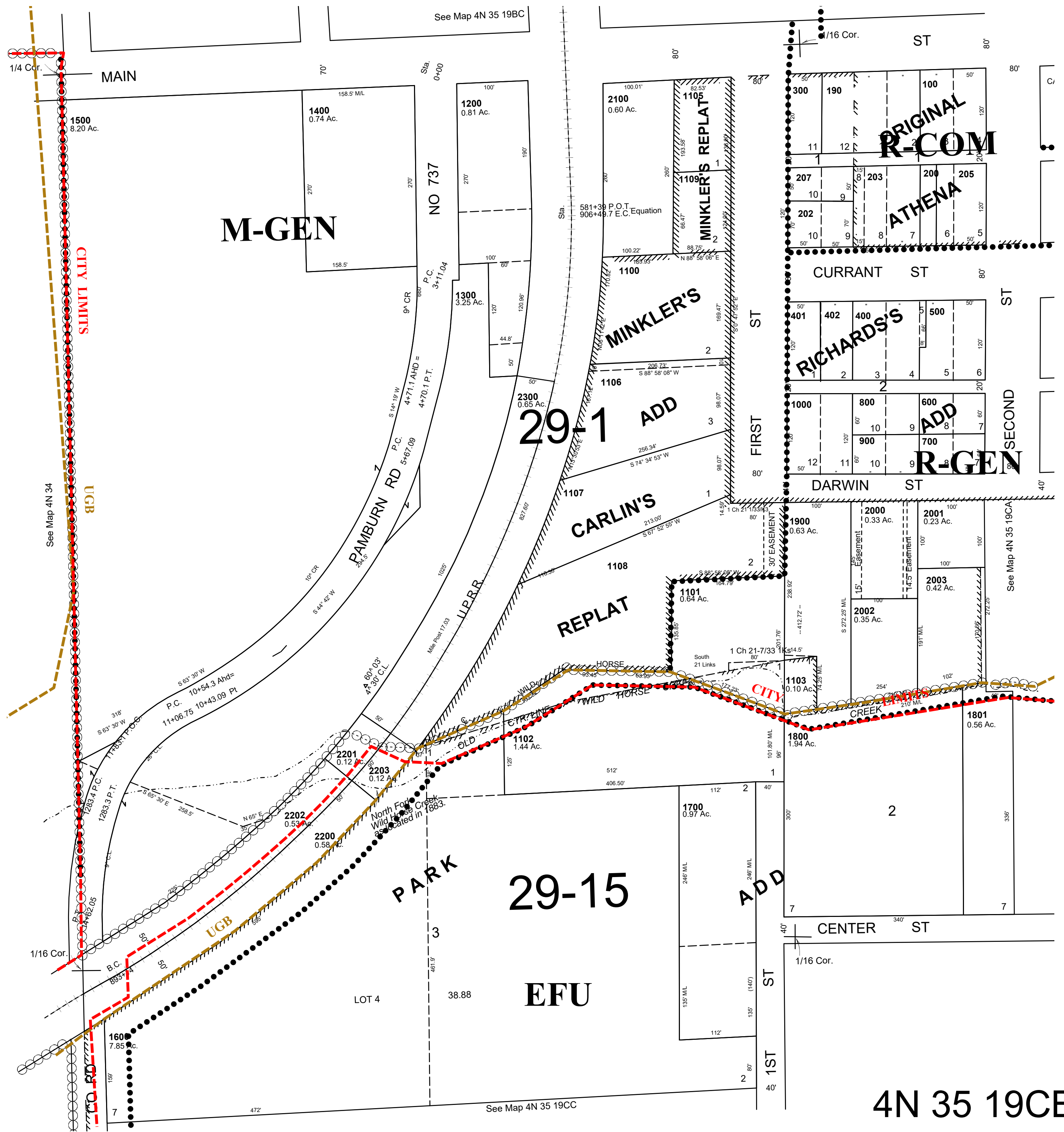
1"=100'

4N 35 19CB

AERIAL PHOTO NO. 5P-100

CITY OF ATHENA

See FIRM for areas subject to flooding



4N 35 19CB