

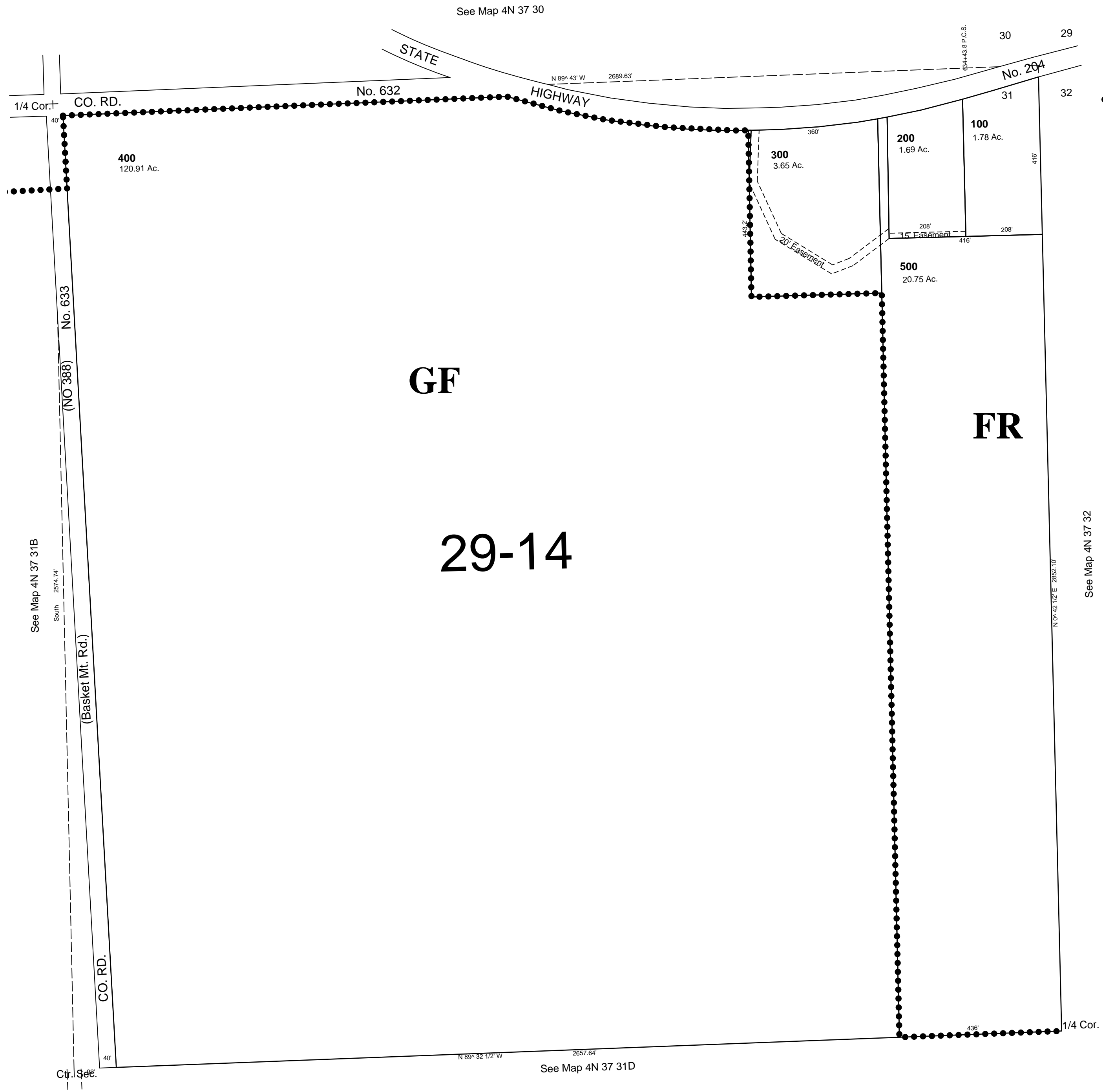
This map was prepared for Assessment and Taxation purposes only and has NOT been prepared for legal, engineering or surveying purposes.

NE1/4 SEC31 T4N R37E WM  
UMATILLA COUNTY  
SCALE 1"= 200'

9/20/06

4N 37 31A

AERIAL PHOTO NO. 9P-38 & 39



4N 37 31A