

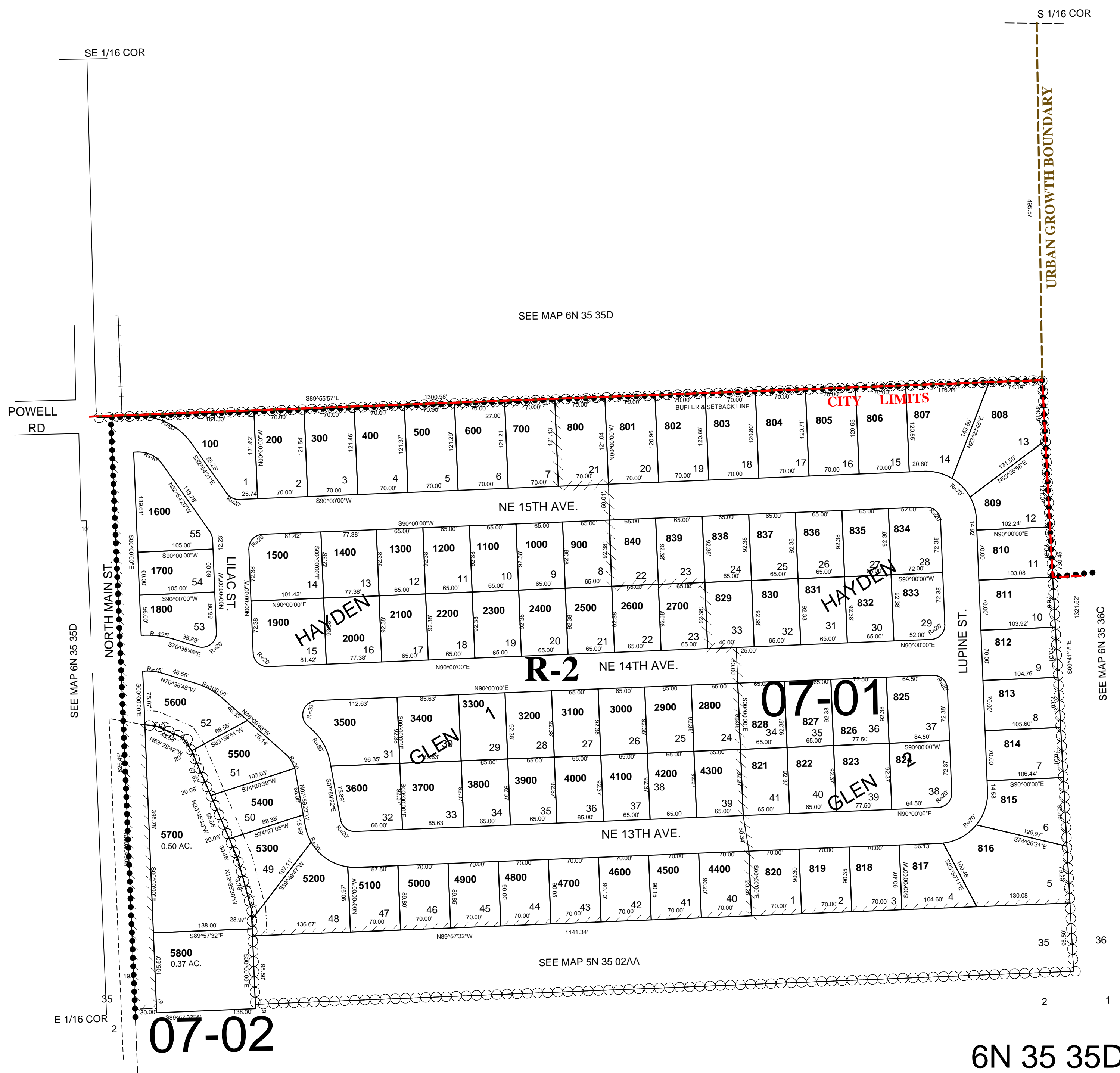
This map was prepared for Assessment & Taxation purposes only and was NOT prepared nor is it suitable for legal, engineering or surveying purposes.

# SE1/4 SE1/4 SEC 35 T6N R35E WM UMATILLA COUNTY

10/16/06

6N 35 35DD  
CITY OF MILTON-FREEWATER

SCALE 1"=100'



6N 35 35DD