

This map was prepared for Assessment & Taxation purposes only and was NOT prepared nor is it suitable for legal, engineering or surveying purposes.

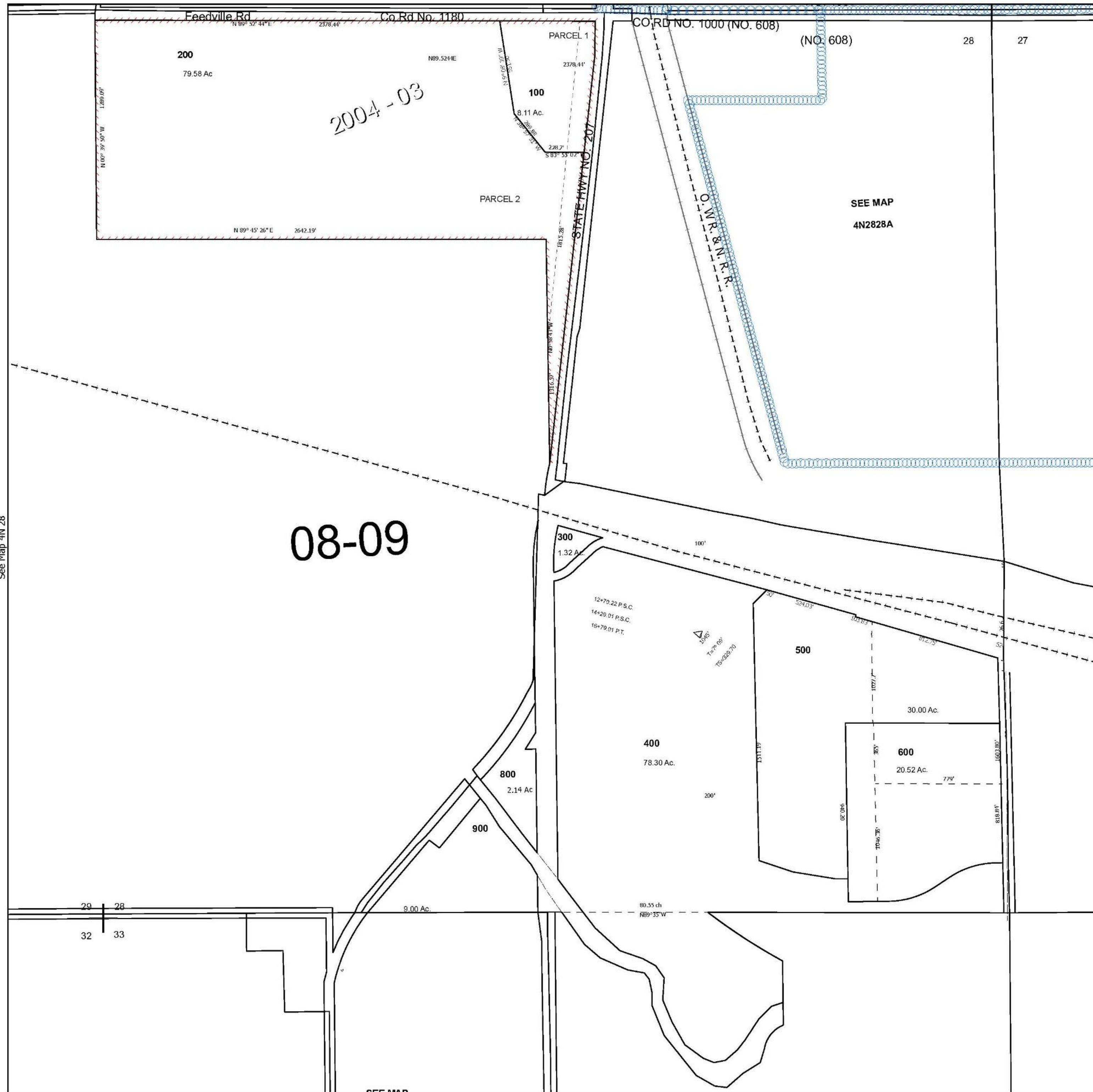
Cancelled Tax Lots

# SEC 28 T4N R28E WM UMATILLA COUNTY

## 4N 28 28

SCALE 1" = 400'

See Map 4N 28 21D



Revised 3/26/2026

## 4N 28 28