

OREGON CORNER RESTORATION FORM

SECTION 1,6,36 TOWNSHIP 4,5 NORTH RANGE 28,29 EAST A-1

COUNTY : UMATILLA DATE 02/02

CORNER DESIGNATION

SECTION CORNER

X CONDITION REPORT ONLY
NOT FOUND
RENEWED
UNCOVERED
SURVEYED IN
X REFERENCED

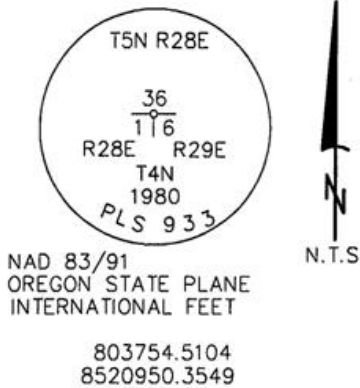
PREVIOUS RENEWALS / SURVEYS, ETC.

ORIGINALLY SURVEYED IN 1860 BY CAMPBELL UNDER CONTRACT #95. HE SET A POST IN A MOUND. IN 1972 STABLER FOUND A 1" IRON PIPE. IN 1980 KRUMBEIN FOUND A 3/4" CONDUIT AND STAKE AND SET A 2 1/2" BC STAMPED AS BELOW.

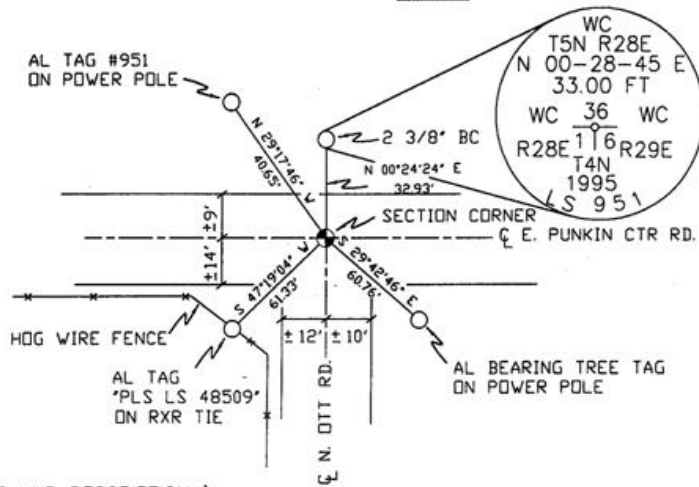
MONUMENTS AND ACCESSORIES FOUND: CONDITION AND SOURCE

AN ALUMINUM BEARING TREE TAG ON A POWER POLE LIES S 29°42'46" E, 60.76 FEET. AN ALUMINUM TAG #951 ON A POWER POLE LIES N 29°17'46" W, 40.65 FEET. A 2 3/8" BC STAMPED AS BELOW LIES N 00°24'24" E, 32.93 FEET.

MONUMENT DETAIL



SKETCH



MONUMENT SET (PROCEDURES AND DESCRIPTION)

NEW ACCESSORIES FROM WHICH

A 1" x 1" ALUMINUM TAG MKD "PLS LS 48509" ON A RXR TIE FENCE POST LIES S 47°19'04" W, 61.33 FEET.

LOCATION AND COMMENTS

AT INTERSECTION OF PUNKIN CENTER RD. AND OTT RD. SOUTH.

COMPASS DEC.

FIRM/AGENCY PRimm LAND SURVEYING P.O. BOX 1322 HERMISTON, OREGON 97838

PARTY CHIEF KEITH P. PRIMM

NOTES

WITNESS BRIT L. PRIMM

SURVEYOR'S SEAL

REGISTERED PROFESSIONAL LAND SURVEYOR

OREGON JULY 13, 1999 BRIT L. PRIMM 48509

EXPIRATION DATE:12/31/02

RECEIVED BY Umatilla County Surveyor Date 3-03 Rec'd By KH No. 03-52-9